



FIRST PRESBYTERIAN CHURCH

*Transforming the
Heart of the City*



Dear Church Family,

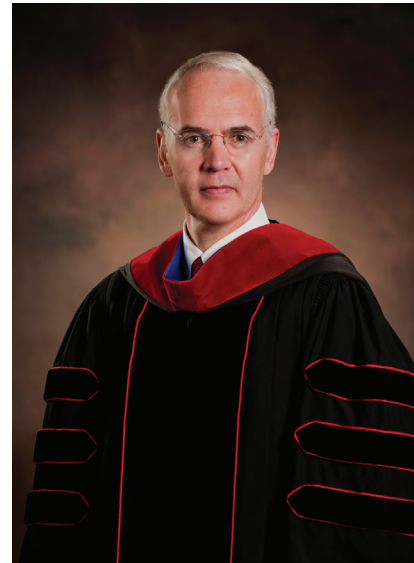
These are exciting days in the life of our church! On behalf of the congregation, I want to personally thank so many of you for your sacrificial and prayerful support of our capital campaign. We have come a long way over the last few years, and we could not have done so without your consistent support of all that God is calling us to.

Our dedicated team of architects, engineers, financial experts, and construction professionals has planned, designed, and constructed outstanding new facilities for our congregation and community. This campus redevelopment will enable us to remain focused on our ministry imperatives to Transform the Heart of the City for many years to come. I know you will be excited to experience our new facilities.

We have a great deal to be thankful to God for, and I cannot wait to see all that He has in store for us in the years ahead.

Yours in Him,

Richard Gibbons



THE LORD'S LEADING & PROVISION *for this Project*

We acknowledge and celebrate the fact that the nine-year path leading to the completion of this remarkable project was led by the Lord, who provided numerous miraculous milestones, many of which are unknown to our church family. Following are some of the highlights:

TIMING

The construction project was contracted at an ideal time for the financial market. The interest rate negotiated for the project is at an historic low. Building materials were purchased well before the recent inflation spike. We have been impacted by COVID and supply chain issues, but had we waited to contract and finance this project by one year, the estimated additional cost could have been as much as \$4 million.

GIVING

Our membership gave generously, but also gave early. This faithful stewardship dramatically reduced our debt and debt service. Our original forecast for debt service was double the amount that has actually taken place because of these generous and timely contributions.



TALENT

The experience and professional skill of the church leaders and members involved in the strategic plan, the master plan, the design, and the construction project resulted in a smooth and integrated process and a high-quality, final product.

THE DRAW

God has sovereignly attracted gifted, talented people to our church to serve in a variety of ways that continue to amaze us. People from all over the country are moving to Greenville in a broad sense, but the Lord has uniquely attracted many Christians to First Pres for such a time as this, bringing a variety of talents, experience, and resources for this project.

We are deeply grateful for the generosity and creativity of our Covenant Partners, who continue to invest in the future of our church and our community for the “Transforming the Heart of the City” campaign.



“...the nine-year path... was led by the Lord, who provided numerous miraculous milestones, many of which are unknown to our church family.”



The Strategic **PLANNING PROCESS**

The strategic planning for this project was an extensive six-year effort divided into two components: the 2013 plan and the 2016 plan. The 2013 Strategic Planning Committee was charged with developing a new strategic vision and expansion plan for First Presbyterian Church. In 2016, the strategic planning effort included an emphasis on facility planning. The analysis of these two plans laid the foundation for the subsequent Campus Master Plan.

THE 2013 PLAN

THE KEY TASKS INVOLVED IN THIS PLAN

- Re-examine our core values
- Evaluate our mission
- Envision the future
- Develop strategies

THESE TASKS WERE EVALUATED BY ASKING OURSELVES THREE QUESTIONS

- Who are we?
- Where are we going?
- How will we get there?

2013 STRATEGIC PLANNING COMMITTEE

Don Nickell (Chair), Steve Finch (Co-Chair), Beverly Jameson (Session), Nancy Caudel, Dean Livingston, Nancy Whitworth, Rip Parks, A.B. Stewart, Mack Ward, Thomas Willcox, David Wilkins, Jack Plating, and Tom Banks

STAFF SUPPORT

Mike Templeton and Marcie Lemley

THE 2016 PLAN

In 2016 we completed the strategic plan for our church. One of the strategic imperatives included in the plan involved our facilities: “FPC will develop and maintain welcoming, secure, and appropriate facilities.”

THE PLAN INCLUDED A NUMBER OF SPECIFIC INITIATIVES

- Develop a campus master plan that leverages our access to the Greenville community and ensures that facilities are appropriate to meet the needs of the growing ministries of FPC.
- Build a gathering area (i.e. “third place”) for improved church fellowship.
- Relocate and expand the Vineyard to have a coffee/bake shop with street access exposure.
- Enlarge and enhance the Ignite worship service facility.
- Provide safe, secure, and updated facilities for our members, children, and guests.
- Provide informational and directional signage and people to direct guests.

2016 STRATEGIC PLANNING COMMITTEE

Don Nickell (Chair), Gill Robison, Bill Sykes, David Dixon, and Rip Parks

STAFF SUPPORT

Rev. Dr. Shelton Sanford, Mike Templeton, and Marcie Lemley

THE 2019 CAMPUS MASTER PLAN

The Strategic Planning Committee began developing a Campus Master Plan. This plan addressed three parcels of our church property:

- The North Campus where our current church facilities are located
- The South Campus across Washington Street
- The Auxiliary Campus across Academy Street

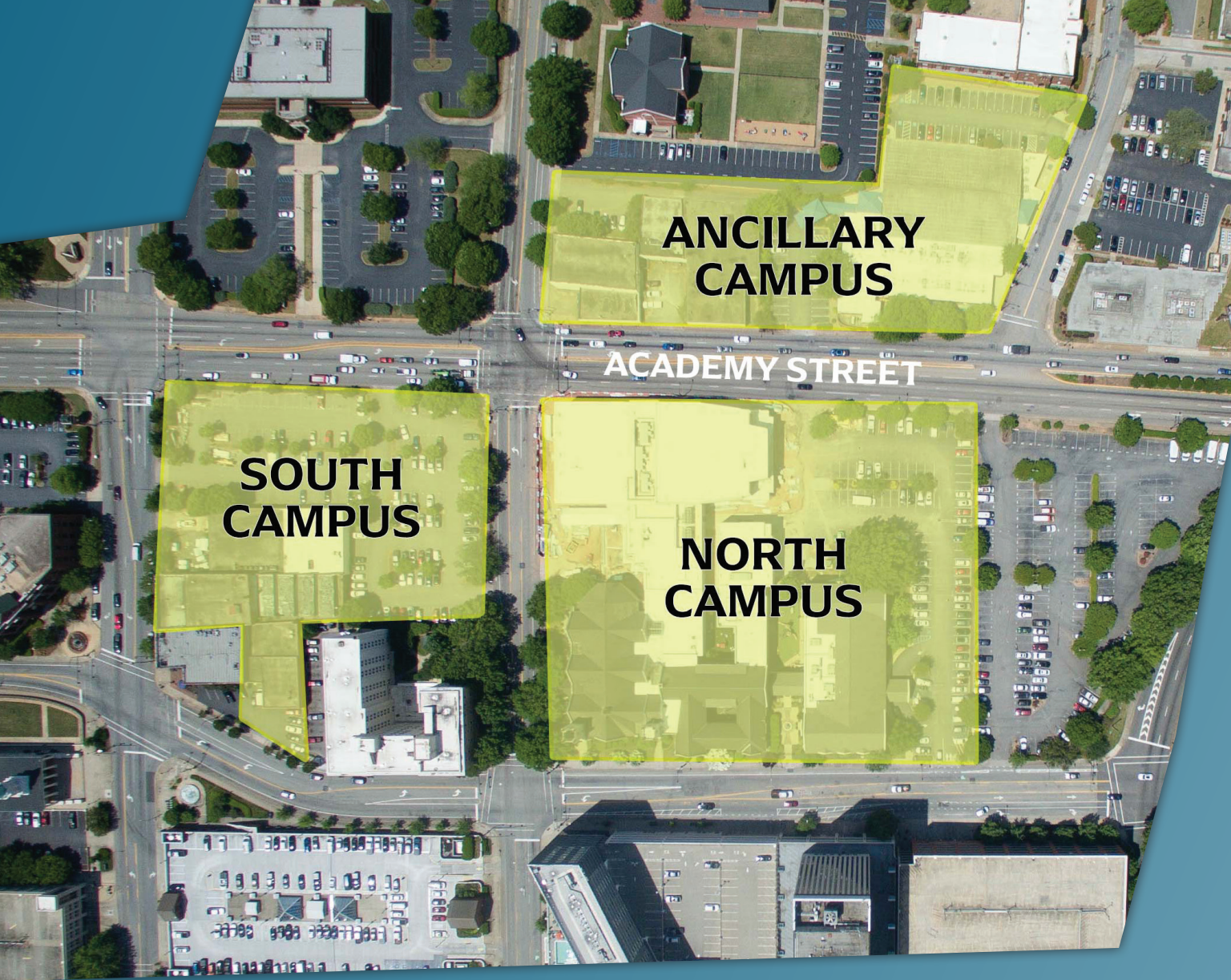
The purpose of the Master Plan was to evaluate and visualize the physical utilization and potential of our downtown property assets in anticipation of the building program.

MASTER PLAN COMMITTEE

Rip Parks (Chair), Harry Bolick, Ben Lanz, Don Nickell, Lee Powell IV, Gill Robison, Tom Roe, and Heather Tapp

STAFF SUPPORT

Rev. Dr. Shelton Sanford and Mike Templeton



THE 2019

Campus Master Plan

SELECTION OF ARCHITECT & ENGINEER

The Strategic Planning Committee engaged the architectural firm of Craig Gaulden Davis to serve as the Project Architects. David Dixon was selected to serve as Project Architect, the Principal-in-Charge. H2L was retained as the Engineer of Record for this engagement with Bill Sykes serving as Principal-in-Charge.

CRAIG
GAULDEN
DAVIS

NORTH CAMPUS DESIGN & CONSTRUCTION COMMITTEE

The Session appointed members to serve on a design and construction committee and charged them with the responsibility to develop a building plan to fulfill the initiatives in the 2016 Strategic Plan. The committee began working on the plan with David Dixon in 2018. Initial drawings were developed, which included a new children's facility, arts center, gathering space, youth area, Intersection coffee café, bookstore, gymnasium, and music offices. The plan also included renovations to our current facilities.

The committee contacted an estimating firm and several local construction companies to develop cost estimates for the project. The final all-in estimate for the project—including all financing, FF&E (furniture, fixtures, and equipment), and contingency—was \$33 million.

COMMITTEE MEMBERS

Tom Banks (Chair), Don Nickell, Bobby Hoffman, and Rip Parks

STAFF SUPPORT

Mike Templeton

ARCHITECT & PRINCIPAL-IN-CHARGE

David Dixon

CAPITAL CAMPAIGN COMMITTEE

The Strategic Planning Committee, with the approval of the Session, appointed Derrick Murdock and Sara Rieser to serve as co-chairs of the committee chosen to raise the funds for the project. Sara and Derrick recruited other members to serve on the Capital Campaign Committee.

MEMBERS

Sara Rieser and Derrick Murdock (co-chairs), Jane Sykes, Heather Ware, Jan Suitt, Rob Hassold, Dorothy Ramseur, Bob August, Christine Brunner, Alison Quarles, David Dykes, and David Holt

STAFF SUPPORT

Richard Gibbons, Shelton Sanford, Mike Templeton, Andy Douglas, and Marcie Lemley



The Capital Campaign was named “Transforming the Heart of the City.”

Realizing that God has strategically placed First Presbyterian Church in the heart of our growing city, we have a responsibility to impact the city with the transforming power of the gospel. We were directed by God's words to His people during the Babylonian Exile:

“Seek the peace and prosperity of the city to which I have carried you into exile. Pray to the Lord for it, because if it prospers, you too will prosper.” —Jeremiah 29:7

The Capital Campaign Committee also chose the development firm INJOY to serve as our consultants for the capital fundraising project. A comprehensive fundraising strategy was developed by the committee and the consultants. It was agreed that we would have two three-year campaigns to raise the funds for the new facilities. The second campaign would take place a year after the completion of the first campaign.



INJOY conducted a feasibility study. The consultants concluded that we could raise up to \$12 million, with the possibility of raising \$15 million. The Capital Campaign Committee decided that we should step out in faith and make \$20 million the goal for the first campaign.

CONGREGATIONAL VOTE

A congregational meeting was called on October 20, 2019, in which the following motion was presented:

“As an active member of First Presbyterian Church, Greenville, SC, I approve a mortgage on the church property for a construction loan not to exceed \$22,000,000 that includes rolling any balance left at the end of the 7-year capital campaign into a term loan not to exceed \$9,000,000.”

Voting on the motion was by secret ballot. Each FPC member was given a ballot with an envelope upon entering the Sanctuary. Completed ballots were deposited with elders stationed at the doors at the conclusion of the meeting.

Following the meeting, ballots were triple-counted by Steve Finch, Clerk of Session, Catherine Culler, Moderator of the Diaconate, and Jim Childers, Chairman of the Board of Directors, under the close supervision of CPA and FPC member George Short. The motion carried, with 71 percent voting in favor.

The Finance Committee solicited and received bids from several financial institutions. First Citizens Bank was chosen because of the favorable terms of the loan they offered. The financial climate worked to our advantage, enabling us to get a low-interest loan that saved us over a million dollars in interest costs.





GROUND-BREAKING *Ceremony*

Following the 11:00am service on Sunday, October 4, 2020, a groundbreaking ceremony took place. Below is the press release for the ceremony:

On Sunday, October 4, First Presbyterian Church broke ground on a \$33 million, 77,000-square-foot campus addition in the heart of downtown Greenville. Members of the congregation, church representatives, and community leaders, including Butch Kirven of Greenville County Council and Wil Brasington from Greenville City Council, were present to mark the historic day.

The new building, designed by local architectural firm Craig Gaulden Davis, will include a 1,100-seat Worship and Arts Center, new gymnasium, state-of-the-art children's facilities, a central gathering space, new youth floor, and additional adult classrooms.



"As part of our 'Transforming the Heart of the City' campaign, the congregation has prayerfully and sacrificially

"...We are privileged to be a part of the extensive growth of the city and look forward to serving the Greenville area for many years to come."

—Rev. Dr. Richard Gibbons





committed to raising \$33 million to help create a campus geared to welcoming the music and arts community of Greenville,” said Senior Pastor Rev. Dr. Richard Gibbons. “We are privileged to be a part of the extensive growth of the city and look forward to serving the Greenville area for many years to come.”

“The project is the result of many years of strategic thinking as to how the church’s deep heritage can impact the heart of this vibrant city. The expansion offers several venues to present the Gospel’s strong message of hope, to strengthen the community of faith, and to significantly enhance the church’s operational efficiency,” said architect David Dixon.

Greenville-based Triangle Construction Company has been chosen to complete the work on the project, bringing the vision of the congregation to life. Construction is expected to be completed in January 2022 and an opening celebration to be held in February 2022.

“First Presbyterian is known as a leading community of faith that cares about the people of Greenville. This new project is not a leap of faith—it is faith with a purpose. Building right here, in the heart of Greenville, is a significant commitment, and these new facilities will become the platform for reaching out and uplifting the lives of many more people throughout the entire Greenville area through faith and good works,” said County Councilman Butch Kirven.

“For nearly 175 years, First Presbyterian Church and its congregation has fostered relationships and provided meaningful service within the City of Greenville. The FPC campus expansion now underway will not only ‘transform the heart of our city’ from a physical standpoint, but will no doubt positively impact and transform the lives of countless Greenvillians who will benefit from its ministries in years to come. It is my hope that the expansion of First Presbyterian’s downtown footprint will only accelerate its mission of growing a vibrant community, rooted in faith,” said City Councilman Wil Brasington.

“First Presbyterian Church has been a grateful neighbor to the community in the heart of downtown Greenville,” said Gibbons. “As we begin to enter the next phase of life and ministry, it would be difficult to exaggerate how excited we are about the future of our rapidly growing city.”

CONSTRUCTION

Progress



THE SYMMES-WILSON BUILDING WAS DEMOLISHED IN JUNE 2020



SITE PREPARATION OCCURRED FROM JULY THROUGH SEPTEMBER 2020





**STEEL ERECTION BEGAN
IN JANUARY 2021**



**THE CHILDREN'S BUILDING
WAS COMPLETED IN
NOVEMBER 2021**



*The anticipated completion
of the other spaces, including
renovations to our current
facilities, is Fall 2022.*



Dedicated **SPACES**



THE GYM is dedicated in honor of Lindsay Graham for his faithful service as Director of Activities from 1974 to 2019.



THE LENZ ART GALLERY is dedicated in memory of Alice Lenz and in honor of Jerry Lenz.



THE GATHERING SPACE is dedicated
in memory of Martha Beth Sturgis.

RENOVATIONS OF CURRENT FACILITIES

New check in area for children's ministry area

New parlor

New bride's room

Nine new adult classrooms/meeting rooms

Enlarged choir room

New studio

New offices for staff

New offices for the First Presbyterian Foundation



*See page 23 for images
of the renovations*

OTHER NOTEWORTHY INFORMATION

The sculpture in the light gallery was given by Mr. and Mrs. Corey Phillips.

Dan Forrest was commissioned to write an anthem entitled "Crown Him," to be performed in our celebration Service on June 5, 2022, and arranged in memory of Dr. Billie Skinner Schiera, Elder of First Presbyterian Church.

The Steinway Concert Grand Piano was given anonymously.

The Bösendorfer Grand Piano was given in memory of Betty Orders by the Orders Family.

FINE ARTS

Ministry

In the 2021 revised update of the strategic plan, a new key initiative was added: “Develop and implement strategies to transform the heart of Greenville, including Performing and Visual Arts programs.” We want to serve our city with our new facilities. Greenville has a robust and growing performing and visual arts community. Our desire is to reach out into the music and arts community by serving artists and showing the glory of God through the arts. Our downtown location provides a strategic venue for encouraging and supporting the arts community in Greenville.

The Session established a Fine Arts Committee, which was given the responsibility to develop a comprehensive Fine Arts ministry, including a Performing Arts program and a Visual Arts program. This ministry is charged with cultivating the fine arts as a medium for ministry outreach to our city.

The Staff Committee approved the addition of a staff position to coordinate the performing and visual arts events generated from the Fine Arts Ministry programs; accordingly, Chelsea Fraser was hired for this important and challenging task as the Director of Program Operations.



FINE ARTS COMMITTEE

Don Nickell (Chair), Jay Bopp, Rich Bradshaw, Dave Burke, Amy Cooter, Rip Parks, and Thomas Willcox

“Our desire is to reach out into the music and arts community by serving artists and showing the glory of God through the arts.”

PERFORMING ARTS SUB-COMMITTEE

Dave Burke (Chair), Amy Cooter, John Hoover, Layne Mauldin, and Michelle Ward

VISUAL ARTS SUB-COMMITTEE

Rip Parks (Chair), Paula Angermeier, Jay Bopp, Kate Fagan, and Jason Hall

STAFF SUPPORT

Rev. Dr. Shelton Sanford, Mike Templeton, and Chelsea Fraser



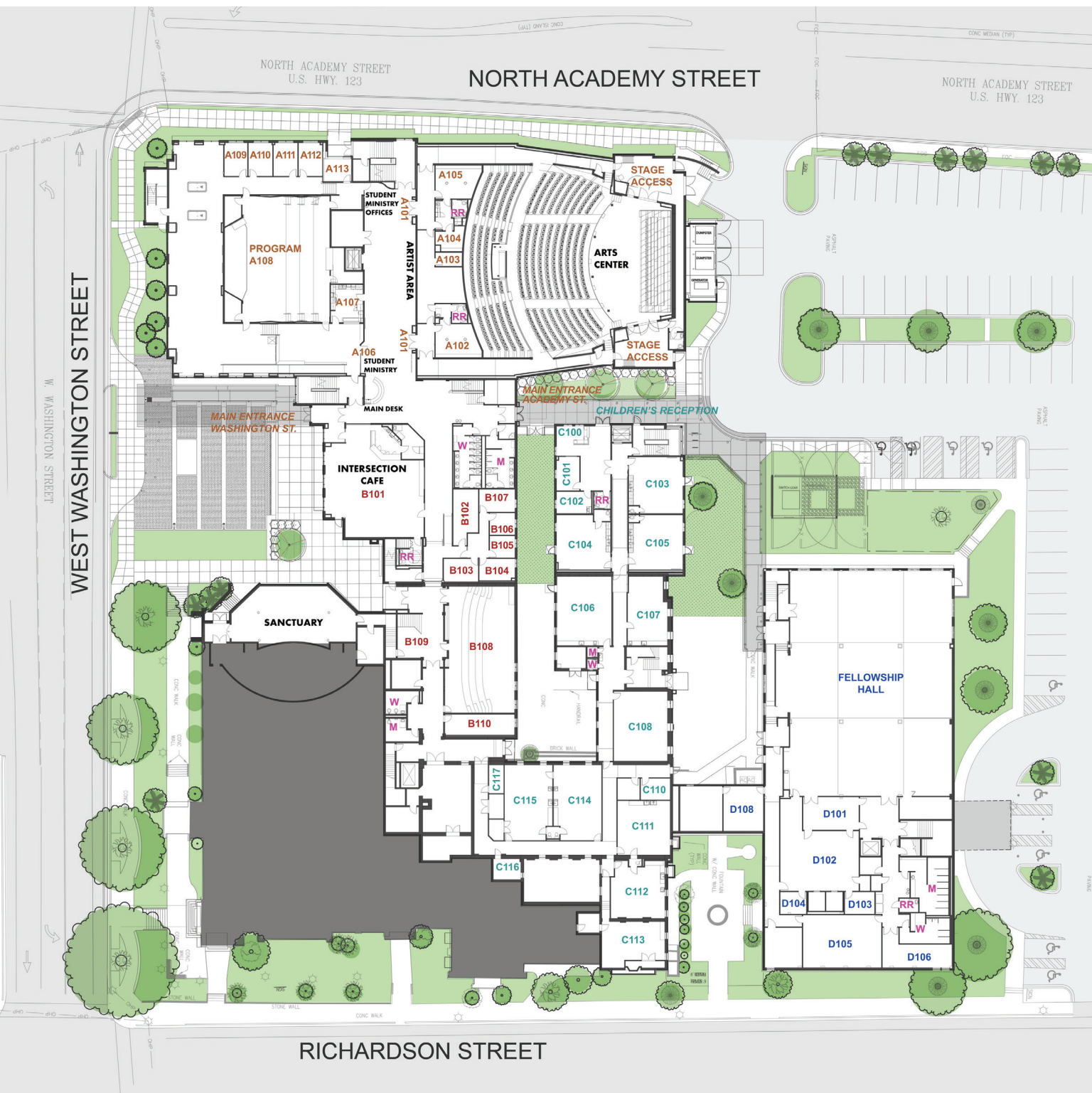
Financial **PROGRESS**

The final goal of the Capital Campaign is \$33,000,000. As of June 2022 we have completed the first half of the capital campaign. The second half of the campaign runs from 2023 through 2026.

The following is a synopsis of our current financial state as of May 6, 2022:

TOTAL AMOUNT PLEDGED	\$18,341,510
AMOUNT GIVEN ABOVE PLEDGED	\$2,148,929
UNPLEDGED GIVING	\$1,072,680
TOTAL AMOUNT PLEDGED, GIVEN ABOVE PLEDGED, AND UNPLEDGED GIVING	\$21,563,119
TOTAL AMOUNT COLLECTED AS OF 5/6/2022	\$19,510,485

FLOOR PLAN: *Lower Level*



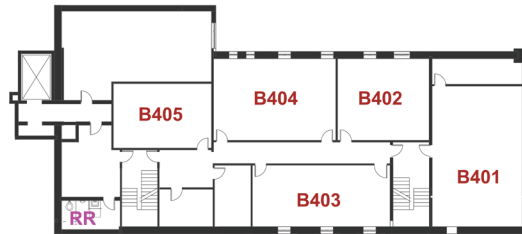
FLOOR PLAN: *Main Level*



FLOOR PLAN: *Upper Level*



FLOOR PLAN: *Fourth Level*



RENOVATION IMAGES:





FIRST
PRESBYTERIAN
CHURCH *Transforming the
Heart of the City*

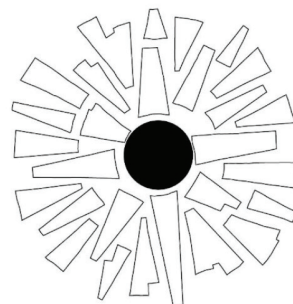
NEW BRAND *Story*

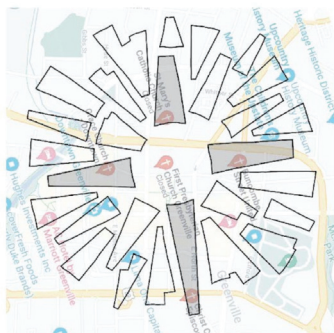
INTENT OF THE LOGO

Our new church logo thoughtfully embodies our history, beliefs, mission, vision, and strategy as a congregation. As a result, we can use it to communicate to ourselves and others God's particular calling for us as a church. The overall goal of the logo is to convey a sense of the inward and outward movement that is reflective of the Holy Spirit's action upon our life together as a congregation. The asymmetric design reflects the organic, living nature of the Body of Christ.

TRANSFORMING THE HEART OF THE CITY: VISION AND CONTEXT

The circle at the middle of the logo represents God's love for the dynamic heart of our city—the people to whom God has called us to bless in the places where we live, work, play, and go to school. **Jeremiah 29:7**





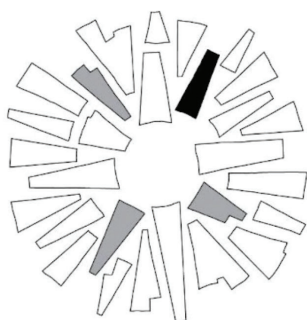
THE CROSS AND THE VARDRY MAP: BELIEFS AND HISTORY

The centrality of the Cross in the logo communicates that Christ is at the center of who we are and what we do. The slight rotation of the Cross aligns with the mid-1800s master plan that city father Vardry McBee drew of Greenville's downtown, in which he placed FPC at the center of five church properties from different denominations.

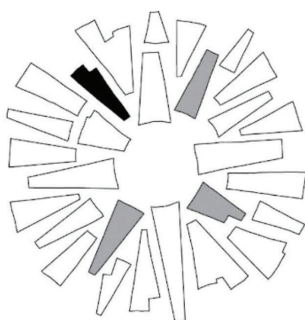
Galatians 2:20; 1 Corinthians 1:23

WORSHIP, CULTIVATE, IMPACT: MISSION

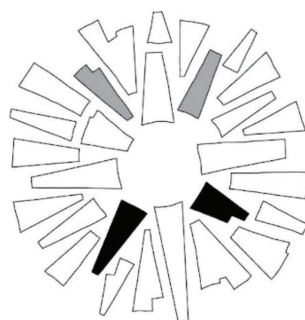
The next group of shapes represents our mission to prepare disciples of Jesus to live life as He did: UP with the Father in worship, IN with other believers, and OUT into this hurting world that He loves. **Luke 6:12-19**



WORSHIP: UP



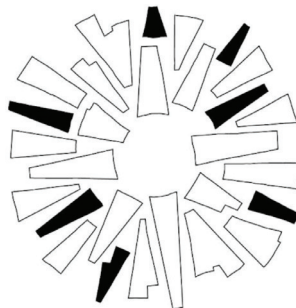
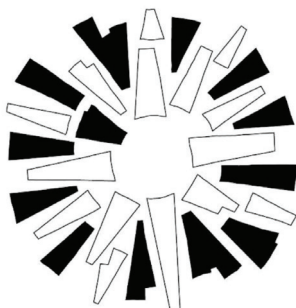
CULTIVATE: IN



IMPACT: OUT

GATHER AND SCATTER: STRATEGY

The inward pointing shapes represent the Holy Spirit's action upon the Church to gather her for corporate worship and equipping. The remaining outward shapes symbolize the Spirit's impulse to send God's people out to be the Church where we live, work, and play. **Acts 2:42-47, 8:1-4**







**FIRST
PRESBYTERIAN
CHURCH** *Transforming the
Heart of the City*

WWW.FIRSTPRESGREENVILLE.ORG • 200 WEST WASHINGTON STREET, GREENVILLE, SC 29601 • 864.235.0496